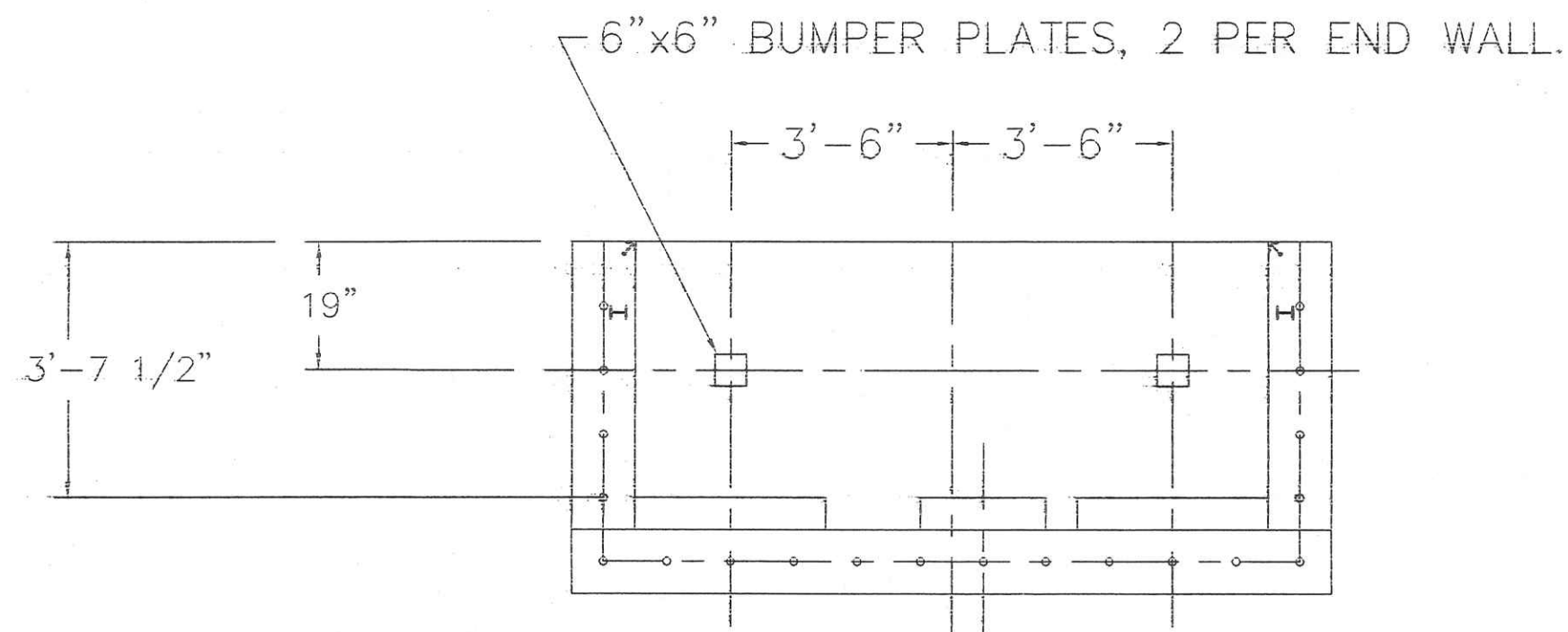


- 1) TOP OF PIER MUST BE SMOOTH, LEVEL AND TRUE TO PLANE.
- 2) FOUNDATION DEPTH AND THICKNESS IS ONLY SUGGESTED BY HSE AND IS THE JOB SITE CONTRACTORS RESPONSIBILITY DEPENDING ON SOIL CONDITIONS.
- 3) H.S.E. SUGGESTS A REINFORCEMENT PATTERN FOR WALLS AND FLOOR OF #4 REBAR IN 12" SQ'S. IT IS ALSO SUGGESTED THAT A 3" I-BEAM BE PLACED 12" FROM TOP OF WALL DOWN IN CENTER OF WALL ALL AROUND. ACTUAL REINFORCEMENT AND SUPPLY OF IS JOB SITE CONTRACTORS RESPONSIBILITY.
- 4) ALL CONNECTIONS BETWEEN LEVERS MUST BE PLUMB. ALL LEVERS MUST BE LEVEL.
- 5) ALL CONCRETE IS TO HAVE A MINIMUM OF 3000 PSI IN 28 DAYS.
- 6) PIT MUST BE KEPT DRY BY SUMP OR DRAIN.
- 7) 2" I.D. CONDUIT FROM SCALE TO DIGITAL RESPONSIBILITY OF OTHERS (ELECTROMECHANICAL)
- 8) SEPARATE CONDUIT MUST BE RUN FOR 110V POWER.
- 9) APPROACHES MUST BE LEVEL 1/2 THE LENGTH OF SCALE. SOME STATES REQUIRE A MINIMUM 10 FEET CONCRETE EACH END. APPROACHES BY OTHERS UNLESS OTHERWISE SPECIFIED.
- 10) SCALES LONGER THAN 30 FEET SHOULD HAVE A MINIMUM OF TWO MANHOLES.
- 11) ELECTROMECHANICAL SCALES SHOULD HAVE A GROUND 12-18" AWAY FROM LOAD CELL 1/2"x8'-10" LG. SUPPLIED BY OTHERS.
- 12) CUSTOMER TO BE RESPONSIBLE FOR ALL PERMITS IF NEEDED.



708 Fillmore

LOADMASTER	
SCALE AND ELECTRONICS HOLTGREVEN SCALE AND ELECTRONICS CORP. 420 E LINCOLN ST. FINDLAY OHIO 45840 (419) 422-4779	
TITLE:	50'x10' 4 SECTION 60T/30T CONCRETE DECK
DATE:	10/18/88
SCALE:	N/A
DWG. NO.	M-15401-PB
REV. DATE:	APP. BY:
DRAWN BY: VINCE MAYNARD	